

2026

Dundee Manufacturing Company

Catalogue



Hanger Edition

Visit Our Website :

www.dundeemfg.com

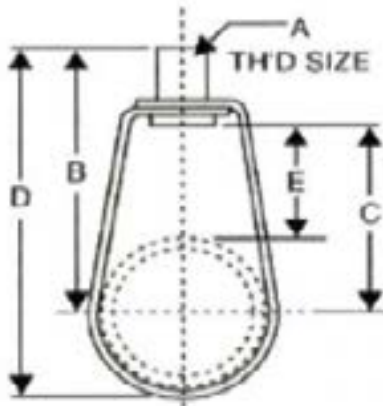




Dundee Manufacturing Company
www.dundeemfg.com
orders@dundeemfg.com

Swivel Rings

Iron Pipe Swivel Ring Hangers



SIZE RANGE: 1/2" through 2" pipe sizes

MATERIAL: Pre-galvanized Carbon Steel with a Zinc Electroplate insert nut

FINISH: Pre-Galvanized.

ORDERING: Specify rod size; finish; and model number and pipe size.

APPROVALS: UL Listing and FM Approved. Complies with Federal Specification WWH-171 (Type 10) and Manufacturers Standardization Society SP-69 (Type 10) and NFPA standards for reduced rod sizes.

FUNCTION: Design and recommended for the suspension of non-Insulated stationary pipe lines. The hanger may be Installed prior to the erection of piping and also allows for vertical adjustment after installation.

Part Number	Pinch Sz: inch	A	B	C	D	E	Max Load	Approx. Weight Per 100 pcs	Carton Quantity
300-204	1/2"	3/8"	2 1/2"	1 1/2"	3"	1 1/8"	400	8	100
300-206	3/4"	3/8"	2 5/8"	1 3/4"	3 1/8"	1 1/8"	400	9	100
300-210	1"	3/8"	2 3/4"	1 7/8"	3 3/8"	1 1/8"	400	10	100
300-212	1 1/4"	3/8"	2 7/8"	2 1/8"	3 3/4"	1 1/8"	400	11	100
300-214	1 1/2"	3/8"	3"	2 1/4"	4"	1 1/8"	400	13	100
300-220	2"	3/8"	3 3/8"	2 1/2"	4 5/8"	1 1/8"	400	14	100

Fire protection - Mechanical - New Commercial Construction - HVAC - Refrigeration - Commercial Plumbing - Water Works - Power Generation

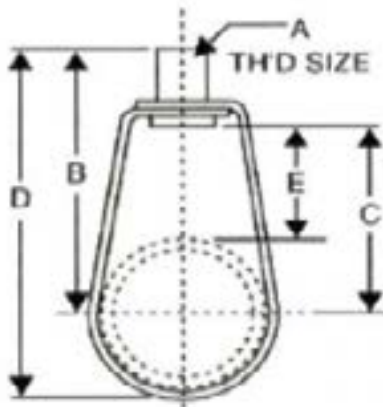




Dundee Manufacturing Company
www.dundeemfg.com
orders@dundeemfg.com

Large Swivel Rings

Large Iron Pipe Swivel Ring Hangers



SIZE RANGE: 2 1/2" through 8" pipe sizes.

MATERIAL: Pre-galvanized Carbon Steel with a Zinc Electroplate insert nut

FINISH: Pre-Galvanized.

ORDERING: Specify rod size; finish; and model number and pipe size.

APPROVALS: UL Listing and FM Approved. Complies with Federal Specification WWH-171E (Type 10) and A-A-1192A (Type 10) and Manufacturers Standardization Society SP-69 (Type 10) and NFPA standards for reduced rod sizes.

FUNCTION: Design and recommended for the suspension of non-insulated stationary pipe lines. The hanger may be installed prior to the erection of piping and also allows for vertical adjustment after installation.

Part Number	Pinch Sz: inch	A	B	C	D	E	Max Load	Approx. Weight Per 100 pcs	Carton Quantity
304-224	2 1/2"	3/8"	3 7/8"	3 1/8"	5 3/8"	1 1/8"	400	8	100
304-230	3"	3/8"	4 1/2"	3 5/8"	6 1/4"	1 1/8"	400	9	100
304-240	4"	3/8"	5"	4 1/8"	7 1/4"	1 1/8"	400	10	100
304-250	5"	1/2"	5 3/4"	4 1/4"	8 1/2"	1 1/8"	400	11	100
304-260	6"	1/2"	6 3/4"	5 1/8"	10 1/8"	1 1/8"	400	13	100
304-280	8"	1/2"	7 7/8"	7"	12 1/4"	1 1/8"	400	14	100

Fire protection - Mechanical - New Commercial Construction - HVAC - Refrigeration - Commercial Plumbing - Water Works - Power Generation

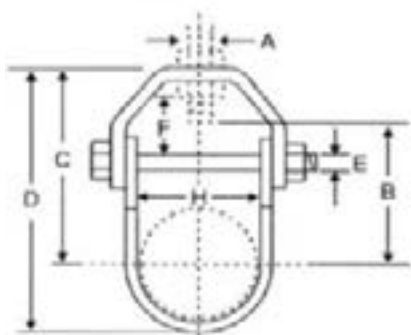




Dundee Manufacturing Company
www.dundeeemfg.com
orders@dundeemfg.com

Light Duty Clevis Hangers

Light Duty Clevis Hanger



SIZE RANGE: 1/2" through 4" pipe sizes.

MATERIAL: Carbon Steel

FINISH: Black.

ORDERING: Specify pipe size; finish; and model number.

APPROVALS: Complies with Federal Specification WW-H-171 (Type 1) and Manufacturers Standardization Society MSS-69 (Type 1).

FUNCTION: Recommended for the suspension of non-insulated stationary pipe lines.

ALSO AVAILABLE IN: Electro-Plated Zinc or Hot Dipped Galvanized.

Part Number	Pinch Sz: inch	A	B	C	D	E	F	H	Max Load	Approx. Weight Per 100 pcs	Carton Quantity
407-104	1/2"	3/8"	1 1/2"	2 1/2"	3 1/2"	1/4"	1 3/16"	3/4"	600	9	100
407-106	3/4"	3/8"	1 5/8"	2 5/8"	3 1/2"	1/4"	1 3/16"	1 1/4"	600	9	100
407-110	1"	3/8"	1 3/4"	2 3/4"	3 1/2"	1/4"	1 3/16"	1 1/2"	600	10	100
407-112	1 1/4"	3/8"	1 7/8"	2 7/8"	3 5/8"	1/4"	1 3/16"	1 3/4"	600	11	100
407-114	1 1/2"	3/8"	2"	3"	4"	1/4"	1 3/16"	2"	600	12	100
407-120	2"	3/8"	2 3/8"	3 3/8"	4 3/4"	1/4"	15/16"	2 1/2"	600	14	100
407-124	2 1/2"	1/2"	3"	4"	5 1/2"	3/8"	1 3/4"	3 1/4"	1100	30	50
407-130	3"	1/2"	3 5/8"	4 5/8"	6"	3/8"	1	3 3/4"	1100	32	50
407-140	4"	5/8"	4 1/4"	5 1/4"	7 1/2"	3/8"	1 3/16"	4 7/8"	1400	44	25

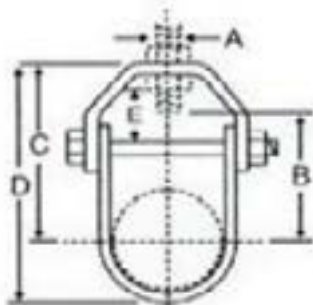
Fire protection - Mechanical - New Commercial Construction - HVAC - Refrigeration - Commercial Plumbing - Water Works - Power Generation





Dundee Manufacturing Company
www.dundeemfg.com
orders@dundeemfg.com

Standard Duty Clevis



Standard Duty Clevis Hanger

SIZE RANGE: 1/2" through 36" pipe sizes.

MATERIAL: Carbon Steel

FINISH: Black.

ORDERING: Specify pipe size; finish; and model number.

APPROVALS: UL Listed and FM Approved (3/4" through 8" only).

Complies with Federal Specification WW-H-171 (Type 12) and Manufacturers Standardization Society MSS-69 (Type 1).

FUNCTION: Recommended for the suspension of non-insulated stationary pipe lines.

ALSO AVAILABLE IN: Electro-Plated Zinc, Hot Dipped Galvanized or Stainless Steel.

Part Number	Pinch Sz: inch	A	B	C	D	E	Max Load	Approx. Weight Per 100 pcs	Carton Quantity
404-104	1/2"	3/8"	1/2"	1 7/8"	2 3/8"	1/2"	600	37	100
404-106	3/4"	3/8"	5/8"	2 1/8"	2 3/4"	5/8"	600	38	100
404-110	1"	3/8"	3/4"	2 1/4"	2 7/8"	3/4"	600	39	100
404-112	1 1/4"	3/8"	2"	2 7/8"	3 3/4"	1 1/8"	600	40	100
404-114	1 1/2"	3/8"	2 1/16"	2 3/4"	3 3/4"	1"	600	44	100
404-120	2"	3/8"	2 5/16"	3 1/2"	4 3/4"	1 1/8"	600	52	100
404-124	2 1/2"	1/2"	2 3/8"	4 1/2"	6"	1 3/8"	1100	108	50
404-130	3"	1/2"	2 7/8"	4 1/2"	6 1/4"	1 3/8"	1100	120	50
404-134	3 1/2"	1/2"	3 3/8"	4 7/8"	6 7/8"	1 1/2"	1100	128	50
404-140	4"	5/8"	3 5/8"	5 3/8"	7 3/4"	1 1/2"	1400	184	25

Fire protection - Mechanical - New Commercial Construction - HVAC - Refrigeration - Commercial Plumbing - Water Works - Power Generation





Dundee Manufacturing Company
www.dundeeemfg.com
orders@dundeemfg.com

Iron Pipe Riser Clamp

Iron Pipe Riser Clamp

SIZE RANGE: 1/2" through 12" pipe size.

MATERIAL: Carbon Steel

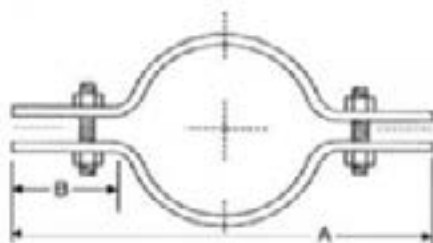
FINISH: Black.

ORDERING: Specify pipe size; finish; and model number.

APPROVALS: Complies with Federal Specification WW-H-171 (Type 8) and Manufacturers Standardization Society MSS-SP-69 (Type 8).

FUNCTIONS: Recommended for supporting and stabilizing vertical pipe runs.

ALSO AVAILABLE IN: Electro-Plated Zinc, Hot Dipped Galvanized or Stainless Steel.



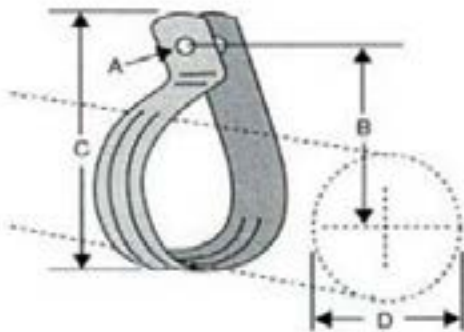
Part Number	Pipe Sz: inch	A	B	Max Load	Approx. Weight Per 100 pcs	Carton Quantity
500-104	1/2"	8.340"	4"	255	121	25
500-106	3/4"	8.550"	4"	255	130	25
500-110	1"	8.815"	4"	255	134	25
500-112	1 1/4"	9.160"	4"	255	142	25
500-114	1 1/2"	9.400"	4"	255	150	25
500-120	2"	9.875"	4"	255	160	25
500-124	2 1/2"	10.625"	4"	390	190	25
500-130	3"	11.250"	4"	530	245	20
500-140	4"	12.500"	4"	810	310	-
500-150	5"	13.563"	4"	1160	350	-
500-160	6"	14.625"	4"	1570	380	-





Dundee Manufacturing Company
www.dundeemfg.com
orders@dundeemfg.com

One-Hole Wrap Around Strap



CPVC One-Hole Wrap Around Strap

SIZE RANGE: 3/4" through 2" pipe sizes.

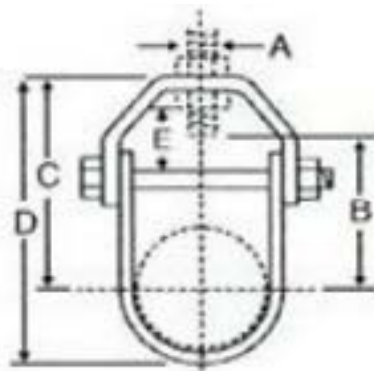
MATERIAL: Pre-galvanized carbon Steel G-90.

FINISH: Pre-galvanized.

ORDERING: Specify pipe size and model number.

APPROVALS: Underwriter's Laboratories approved for the support of CPVC piping.

FUNCTION: Design to support or restraint when installed with the tabs in the up or down position. It may also be used on top of a beam as a guide. It is not recommended for use underneath a beam as a ceiling type hanger.



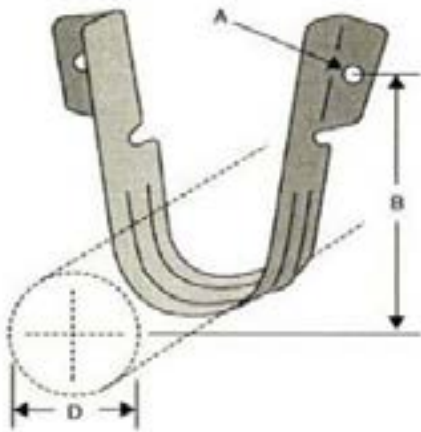
Part Number	Pinch Sz: inch	A	B	C	D	Material	Approx. Weight Per 100 pcs	Carton Quantity
624-206	3/4"	7/32"	1 1/2"	2 1/2"	1.050"	20 ga. x 1 1/8"	9	100
624-210	1"	7/32"	1 5/8"	2 7/8"	1.313"	20 ga. x 1 1/8"	10	100
624-212	1 1/4"	7/32"	1 3/4"	3"	1.660"	20 ga. x 1 1/8"	12	100
624-214	1 1/2"	7/32"	1 7/8"	3 3/8"	1.900"	20 ga. x 1 1/8"	12	100
624-220	2"	7/32"	2"	3 3/4"	2.375"	20 ga. x 1 1/8"	15	100





Dundee Manufacturing Company
www.dundeeemfg.com
orders@dundeemfg.com

Two-Hole 90 Degree Side Mount Strap



CPVC Two-Hole 90 Degree Side Mount Strap

SIZE RANGE: 3/4" through 2" pipe sizes.

MATERIAL: Pre-galvanized carbon Steel G-90.

FINISH: Pre-galvanized.

ORDERING: Specify pipe size and model number.

APPROVALS: Underwriter's Laboratories approved for the support of CPVC piping.

FUNCTION: Design to support or restraint pipe from either a top or bottom beam installation. It can also help restrain an upward movement of the sprinkler head once activated.

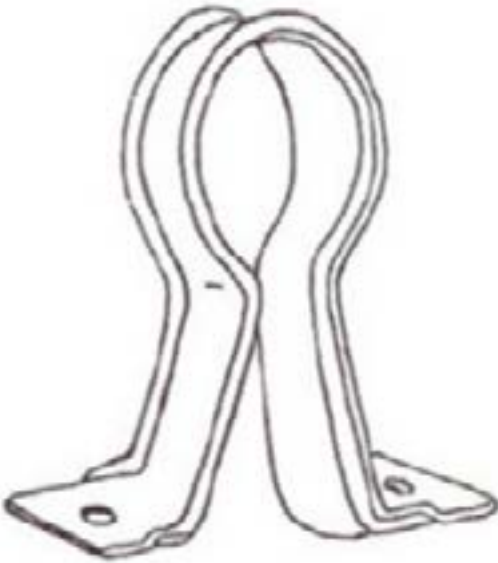
Part Number	Pipe Sz: inch	A	B	D	Material	Approx. Weight Per 100 pcs	Carton Quantity
625-206	3/4"	7/32"	1 1/2"	1.050"	20 ga. x 1 1/8"	100	9
625-210	1"	7/32"	1 1/2"	1.313"	20 ga. x 1 1/8"	100	10
625-212	1 1/4"	7/32"	1 3/4"	1.660"	20 ga. x 1 1/8"	100	11
625-214	1 1/2"	7/32"	1 7/8"	1.900"	20 ga. x 1 1/8"	100	12
625-220	2"	7/32"	2"	2.375"	20 ga. x 1 1/8"	100	13





Dundee Manufacturing Company
www.dundeeemfg.com
orders@dundeemfg.com

CPVC Stand-Off Hanger



CPVC Stand-Off Hanger

SIZE RANGE: 3/4" through 2" pipe sizes.

ORDERING: Specify size and model number.

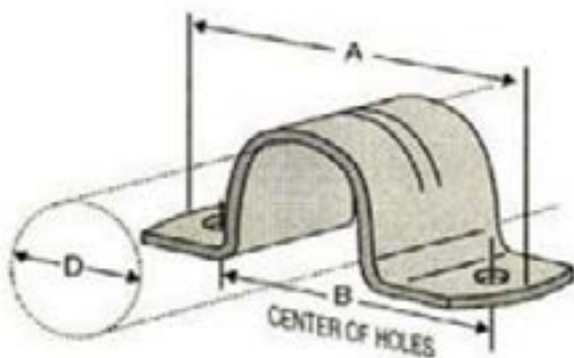
Part Number	Wt. /Ea.	Net	Size Inch	Box Quantity
627-206	.08	.56	3/4"	100
627-210	.09	.58	1"	100
627-212	.11	.61	1 1/4"	100
627-214	.16	.67	1 1/2"	100
627-220	.11	.71	2"	50





Dundee Manufacturing Company
www.dundeeemfg.com
orders@dundeemfg.com

Two-Hole CPVC Strap



Two-Hole CPVC Strap

SIZE RANGE: 3/4" through 2" pipe sizes.

MATERIAL: Pre-galvanized carbon Steel G-90.

FINISH: Pre-galvanized.

ORDERING: Specify pipe size and model number.

APPROVALS: Underwriter's Laboratories approved for the support of CPVC piping.

FUNCTION: Design to support or restraint when installed with the tabs in the up or down position. It may also be used on top of a beam as a guide. It is not recommended for use underneath a beam as a ceiling type hanger.

Part Number	Pinch Sz: inch	A	B	D	Material	Approx. Weight Per 100 pcs	Carton Quantity
623-206	3/4"	3.310"	2.400"	1.050"	20 ga. x 1 1/8"	9	100
623-210	1"	3.550"	2.640"	1.313"	20 ga. x 1 1/8"	12	100
623-212	1 1/4"	3.925"	3.010"	1.660"	20 ga. x 1 1/8"	12	100
623-214	1 1/2"	4.185"	3.265"	1.900"	20 ga. x 1 1/8"	12	100
623-220	2"	4.575"	3.665"	2.375"	20 ga. x 1 1/8"	15	100





Dundee Manufacturing Company
www.dundeeemfg.com
orders@dundeemfg.com

Top Beam Clamp

SilverHawk 103 Series Top Beam Clamp #103-101S

Categories: Pipe Clamps for O.D Tubing, SilverHawk Series
 103 Top Beam Clamp

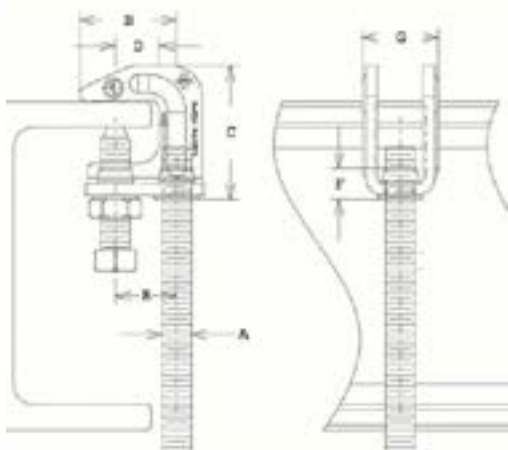
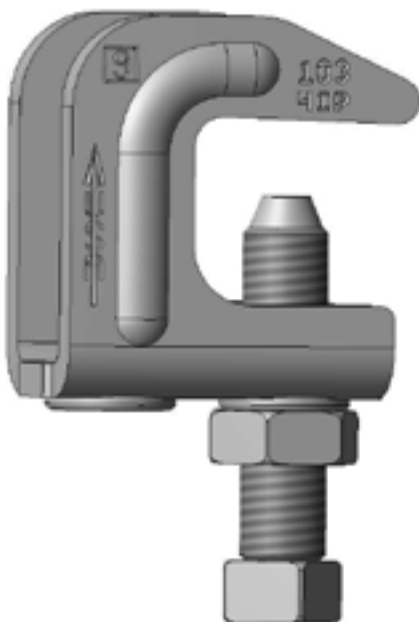
SIZE RANGE: 3/8" rod sizes.

MATERIAL: Cold rolled steel with a plated hardened cup point
 set screw and lock nut.

FINISH: Electro-plated zinc

ORDERING: Specify 103-101S SilverHawk

INSTALLATION: Must install in an upright position. Torque
 Value = 60 in-lbs When a torque wrench is not available, the
 setscrew should be tightened so it contacts the I-beam and
 then add an additional 1/4 to 1/2 turn.



Product Information	Details
A	3/4"
B	1 3/16"
C	1 5/8"
D	17/32"
E	3/4"
F	3/8"
G	15/16"
Approx. Weight per 100 (pcs.)	20 lbs.
Max. Recommended Load	400 lbs.
Carton Quantity	100

Fire protection - Mechanical - New Commercial Construction - HVAC - Refrigeration - Commercial
 Plumbing - Water Works - Power Generation





Dundee Manufacturing Company
www.dundeeemfg.com
orders@dundeemfg.com

Universal Beam Clamp

Series 100 Universal Beam Clamp

Recommended for attaching hanger rod to top or bottom flange of a beam or bar joist, where the thickness of a joist or flange doesn't exceed 3/4 inch. The open back design permits rod adjustment.

SIZE RANGE: 3/8" through 7/8" rod sizes.

MATERIAL: Malleable iron casting with a hardened cup point set screw and lock nut.

FINISH: Black.

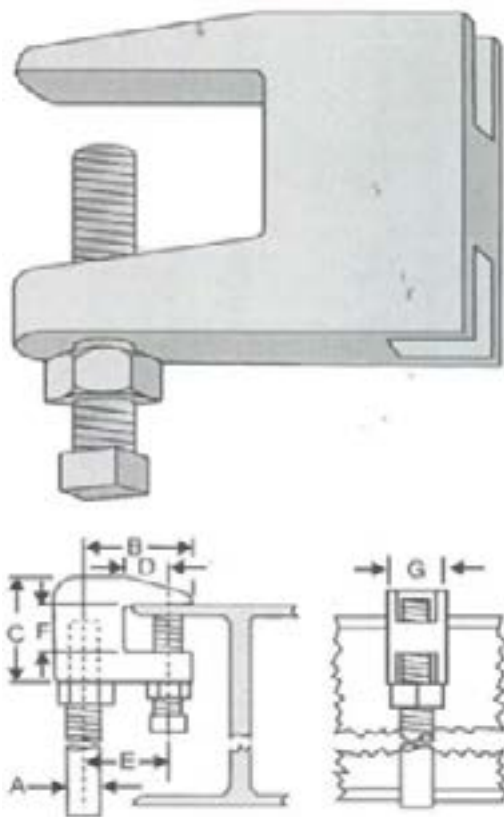
ORDERING: Specify rod size; finish; and model number.

APPROVALS: UL Listed for top or bottom of Beam. FM Approved for NFPA 13, maximum rated pipe size. Complies with Manufacturers Standardization Society SP-69 (Type 19 & 23).

FUNCTION: Recommended for attaching hanger rod to top or bottom flange of a beam or bar joist, where the thickness of a joist or flange does not exceed 3/4 inch. The open back design permits rod adjustment.

INSTALLATION: Must install in an upright position.

ALSO AVAILABLE IN: Electro-Plated Zinc and 304 Stainless Steel



Item#	A	B	C	D	E	F	G	Approx Weight Per 100 pcs.	Carton QTY	Max Rec. Load
103-101	3/8"	1"	1 1/2"	1/2"	1"	3/4"	7/8"	33	100	400 lbs
104-101	1/2"	1"	1 1/2"	1/2"	1"	3/4"	7/8"	33	100	500 lbs
105-101	5/8"	1 1/2"	1 1/2"	1/2"	1"	3/4"	1"	22	50	600 lbs
106-101	3/4"	1 7/8"	1 3/4"	5/8"	1 3/8"	3/4"	1 1/4"	88	50	800 lbs
107-101	7/8"	2"	1 3/4"	5/8"	1 1/2"	3/4"	1 1/4"	79	25	1200 lbs

Fire protection - Mechanical - New Commercial Construction - HVAC - Refrigeration - Commercial
 Plumbing - Water Works - Power Generation





Dundee Manufacturing Company
www.dundeeemfg.com
orders@dundeemfg.com

Top Beam Clamp

Series 100 Universal Beam Clamp

Recommended for attaching hanger rod to top or bottom flange of a beam or bar joist, where the thickness of a joist or flange doesn't not exceed 3/4 inch. The open back design permits rod adjustment.

SIZE RANGE: 3/8" through 7/8" rod sizes.

MATERIAL: Malleable iron casting with a hardened cup point set screw and lock nut.

FINISH: Black.

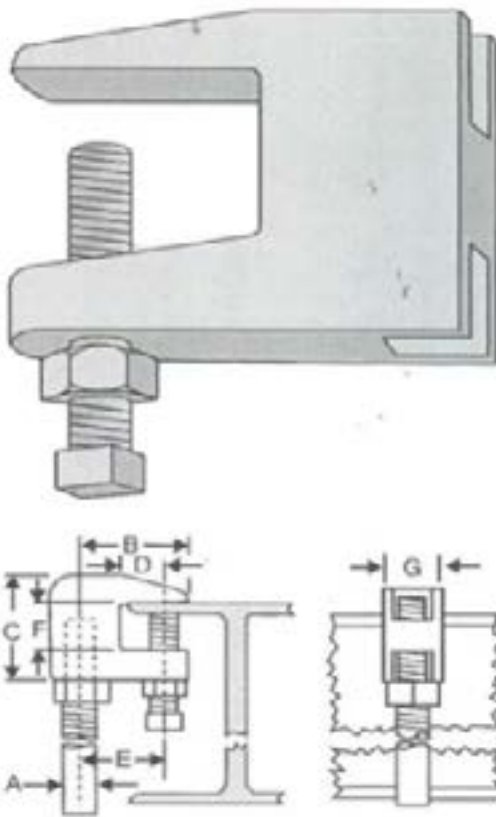
ORDERING: Specify rod size; finish; and model number.

APPROVALS: UL Listed for top or bottom of Beam. FM Approved for NFPA 13, maximum rated pipe size. Complies with Manufacturers Standardization Society SP-69 (Type 19 & 23).

FUNCTION: Recommended for attaching hanger rod to top or bottom flange of a beam or bar joist, where the thickness of a joist or flange does not exceed 3/4 inch. The open back design permits rod adjustment.

INSTALLATION: Must install in an upright position.

ALSO AVAILABLE IN: Electro-Plated Zinc and 304 Stainless Steel



Item#	A	B	C	D	E	F	G	Approx Weight Per 100 pcs.	Carton QTY	Max Rec. Load
103-101	3/8"	1"	1 1/2"	1/2"	1"	3/4"	7/8"	33	100	400 lbs
104-101	1/2"	1"	1 1/2"	1/2"	1"	3/4"	7/8"	33	100	500 lbs
105-101	5/8"	1 1/2"	1 1/2"	1/2"	1"	3/4"	1"	22	50	600 lbs
106-101	3/4"	1 7/8"	1 3/4"	5/8"	1 3/8"	3/4"	1 1/4"	88	50	800 lbs
107-101	7/8"	2"	1 3/4"	5/8"	1 1/2"	3/4"	1 1/4"	79	25	1200 lbs

Fire protection - Mechanical - New Commercial Construction - HVAC - Refrigeration - Commercial
 Plumbing - Water Works - Power Generation

